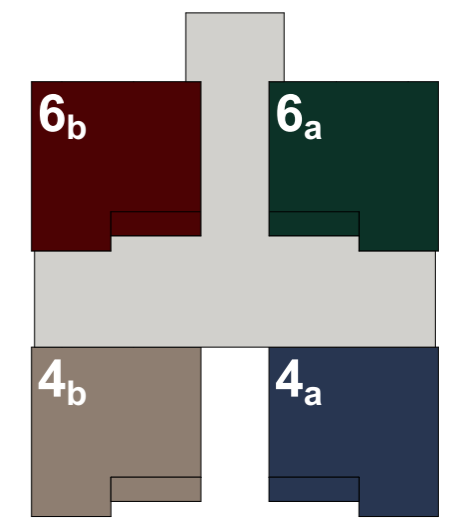




4EFH BASSERSDORF

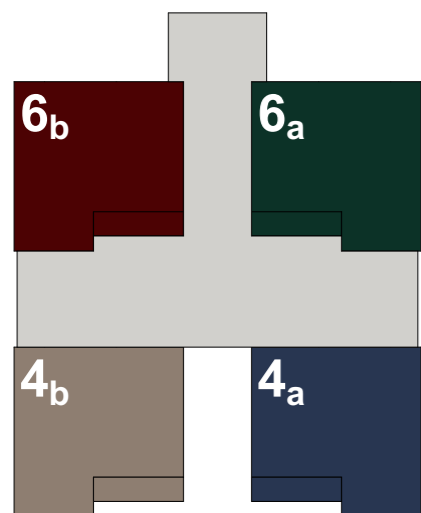


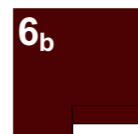
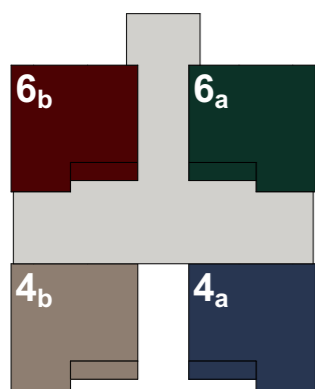
Traumhafte moderne Einfamilienhäuser in Bassersdorf – Ihr neues Zuhause wartet!

Willkommen am Waldrand von Bassersdorf, wo Ihre Traumimmobilie Wirklichkeit wird! Hier entstehen vier exklusive 5 1/2 - 6 1/2 Zimmer-Einfamilienhäuser, die Ende 2026 bezugsfertig sein werden. Diese modernen Objekte erfüllen höchste Ansprüche an Komfort, Ästhetik und Funktionalität.

Highlights

- Grosszügige Wohnfläche
- Moderne Architektur
- Hochwertige Materialien
- Innovative Ausstattung
- Traumhafte Lage





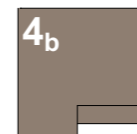
ZIMMER
GESAMTWOHNFLÄCHE
GRÜNFLÄCHE

6 1/2
 238.7 m²
 361.92 m²



ZIMMER
GESAMTWOHNFLÄCHE
GRÜNFLÄCHE

6 1/2
 238.7 m²
 319.14 m²



ZIMMER
GESAMTWOHNFLÄCHE
GRÜNFLÄCHE

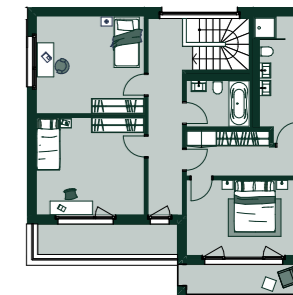
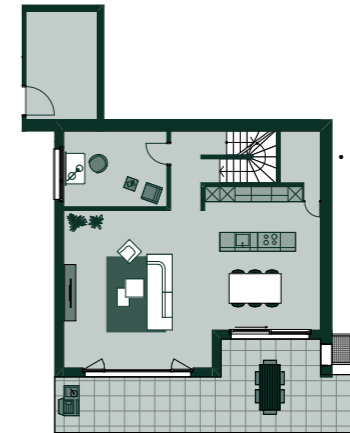
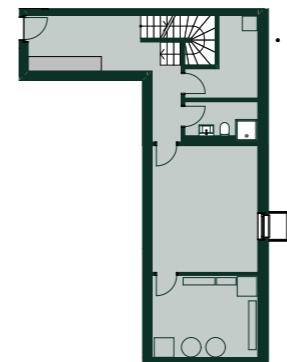
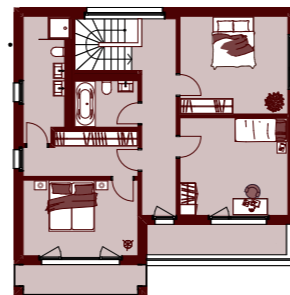
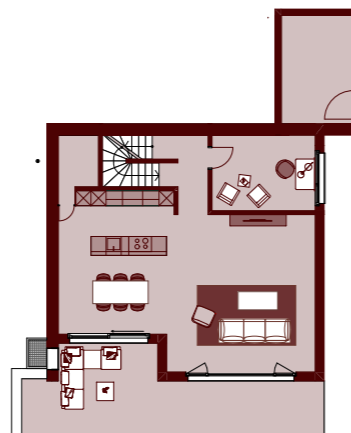
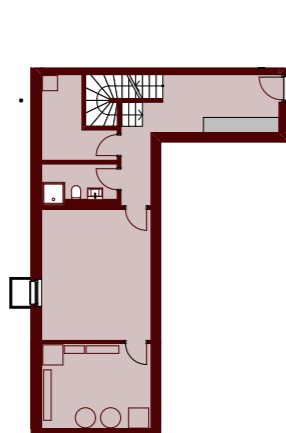
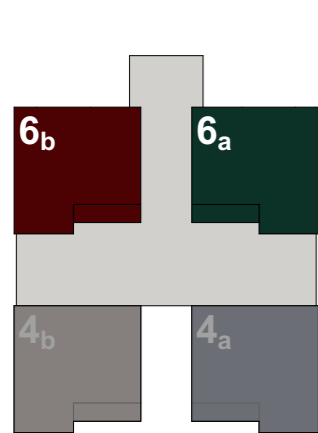
5 1/2 - 6 1/2
 242.4 m²
 144.68 m²

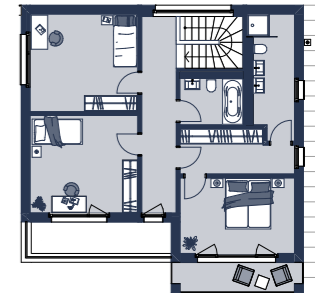
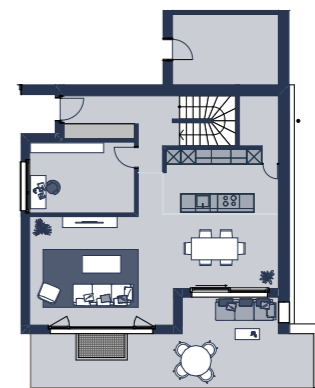
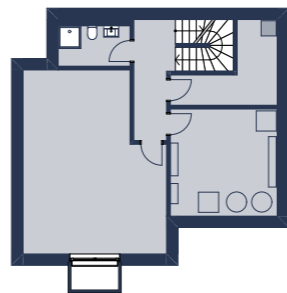
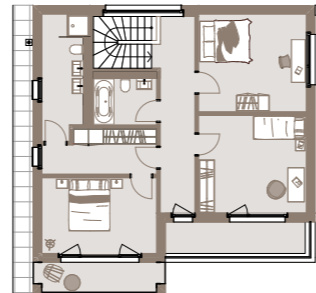
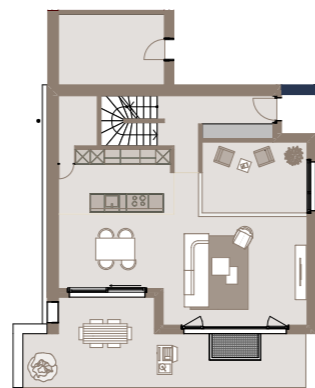
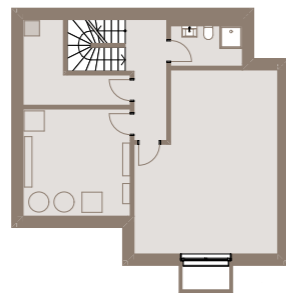
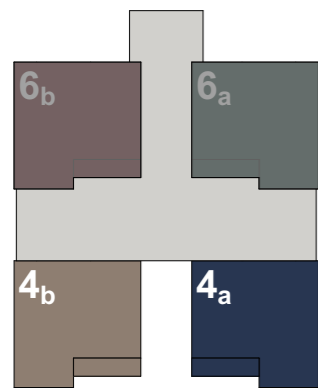


ZIMMER
GESAMTWOHNFLÄCHE
GRÜNFLÄCHE

6 1/2
 242.0 m²
 154.38 m²

UNSERE EINFAMILIENHÄUSER BIETEN 5 1/2 ODER 6 1/2 ZIMMER – MIT OPTIONALEM BÜRO DURCH FLEXIBLE WANDGESTALTUNG. EIN BEISPIEL DAVON IST BEI HAUS 3 (BEIGE) ERSICHTLICH.





ALTE BERGSTRASSE

4A / 4B / 6A / 6B

8303 BASSERSDORF

ÖV-ANBINDUNG

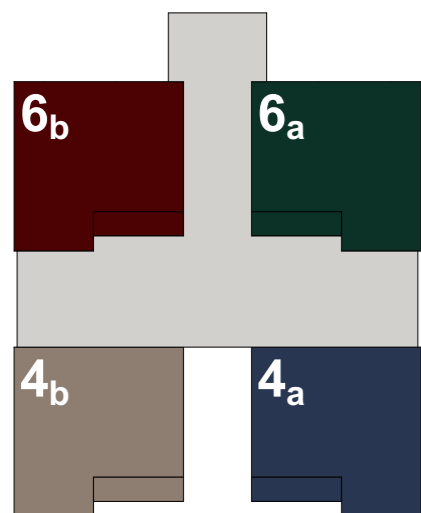
NACH ZÜRICH FLUGHAFEN
NACH ZÜRICH HAUPTBAHNHOF
NACH WINTERTHUR

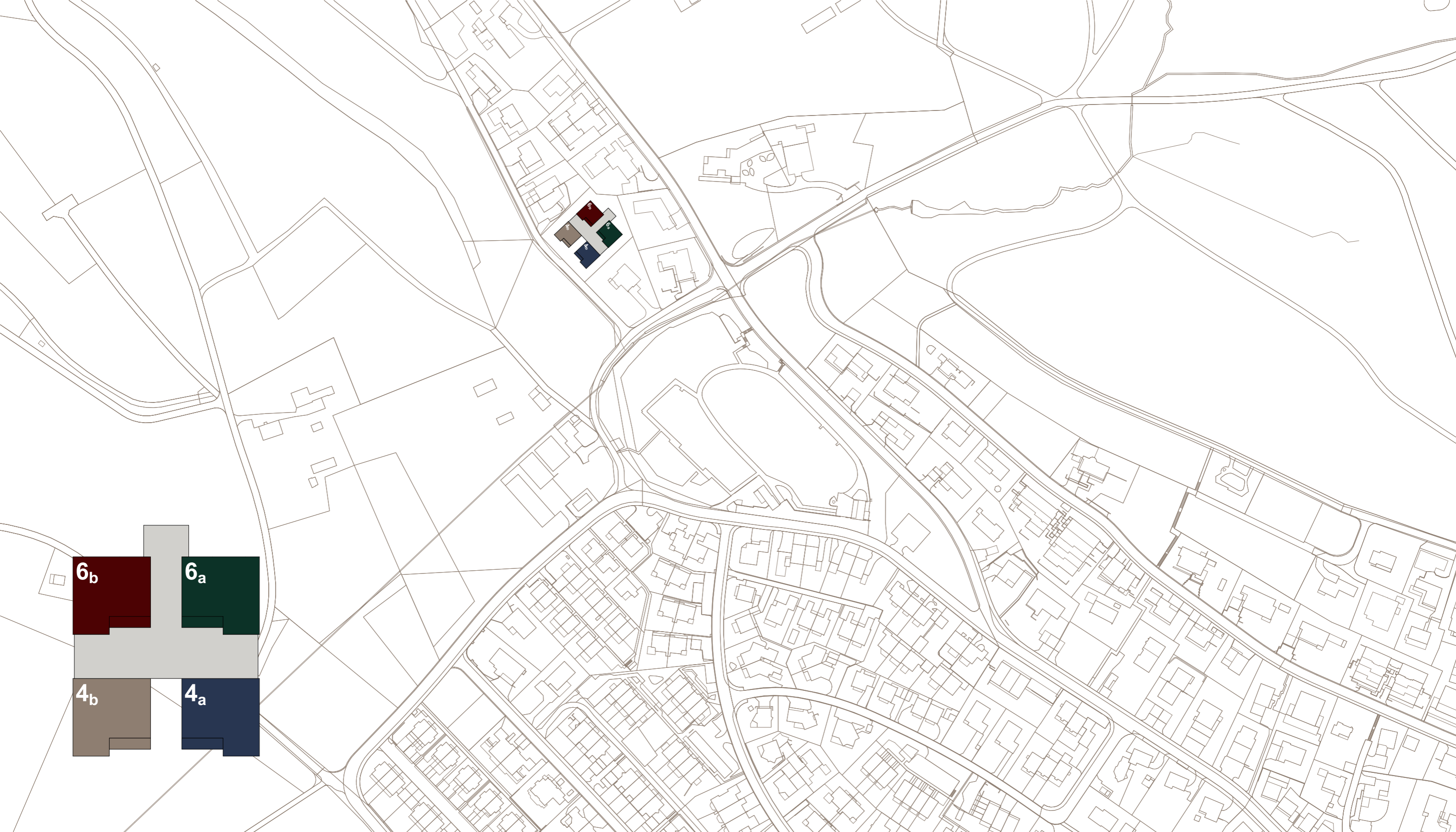
04 MIN
20 MIN
14 MIN

STRASSENNETZ

NACH ZÜRICH FLUGHAFEN
NACH ZÜRICH HAUPTBAHNHOF
NACH WINTERTHUR

11 MIN
19 MIN
18 MIN





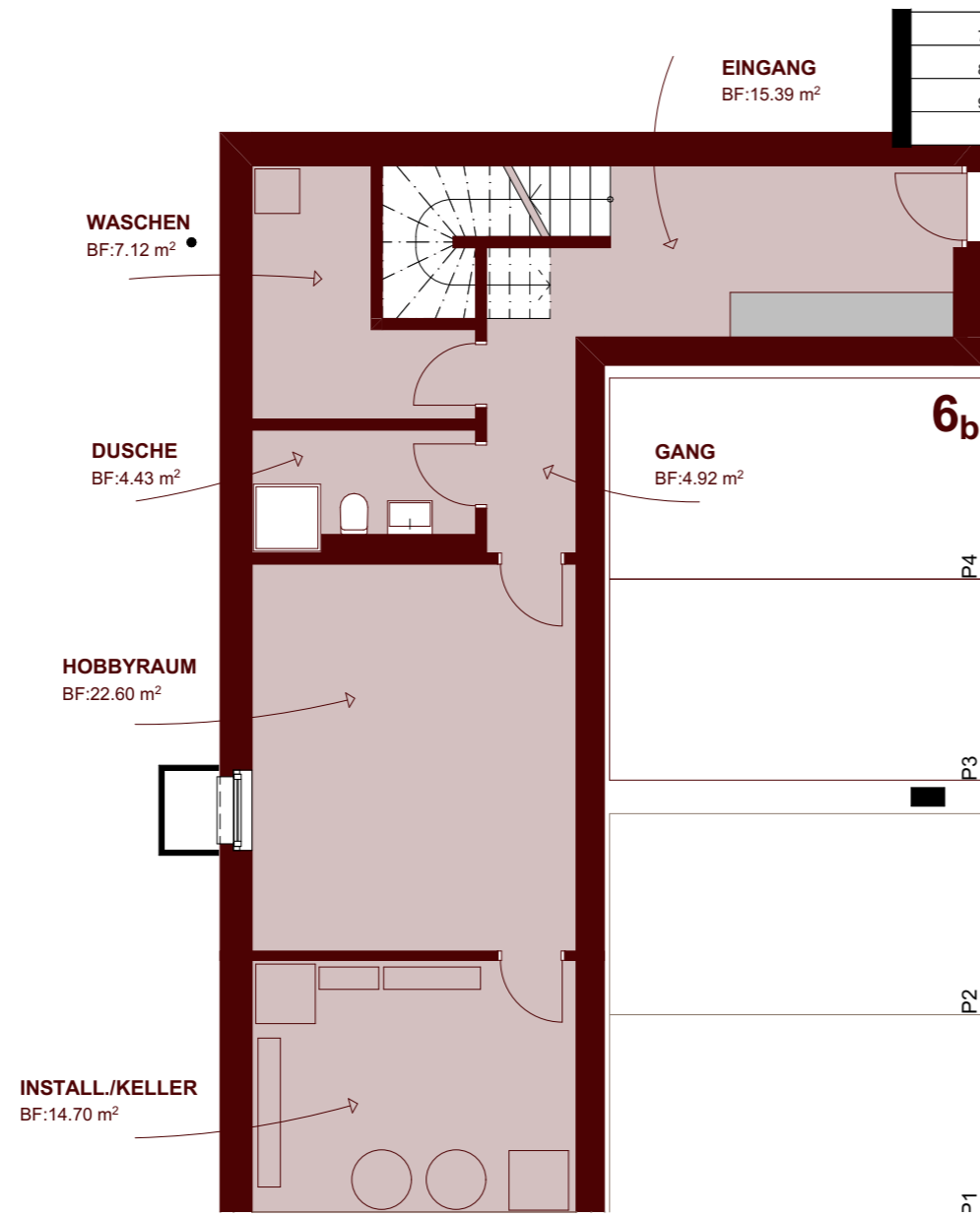
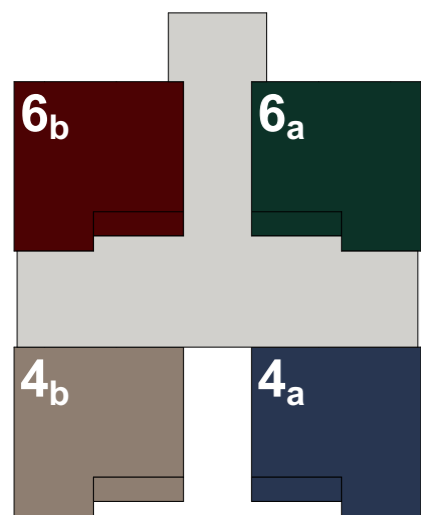
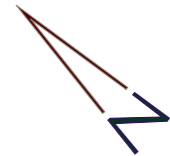
6_b

6_a

4_b

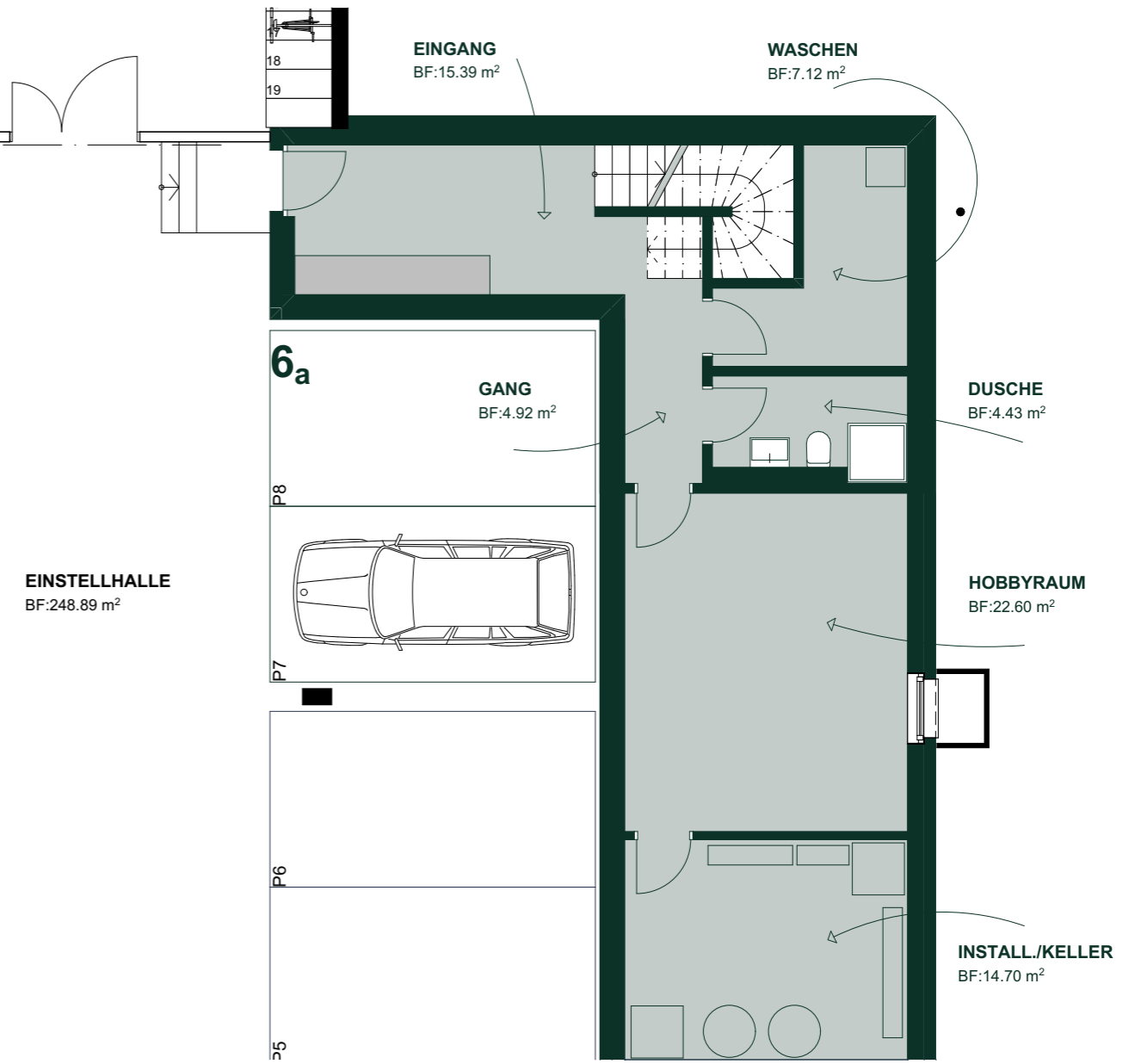
4_a

UG



**HAUS 6b
UNTERGESCHOSS**
ZIMMER
WOHNFLÄCHE UG
GESAMTWOHNFLÄCHE

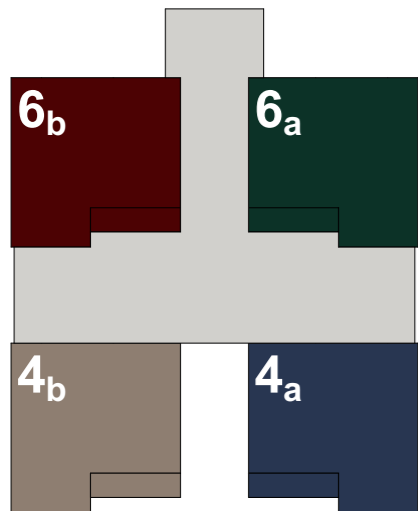
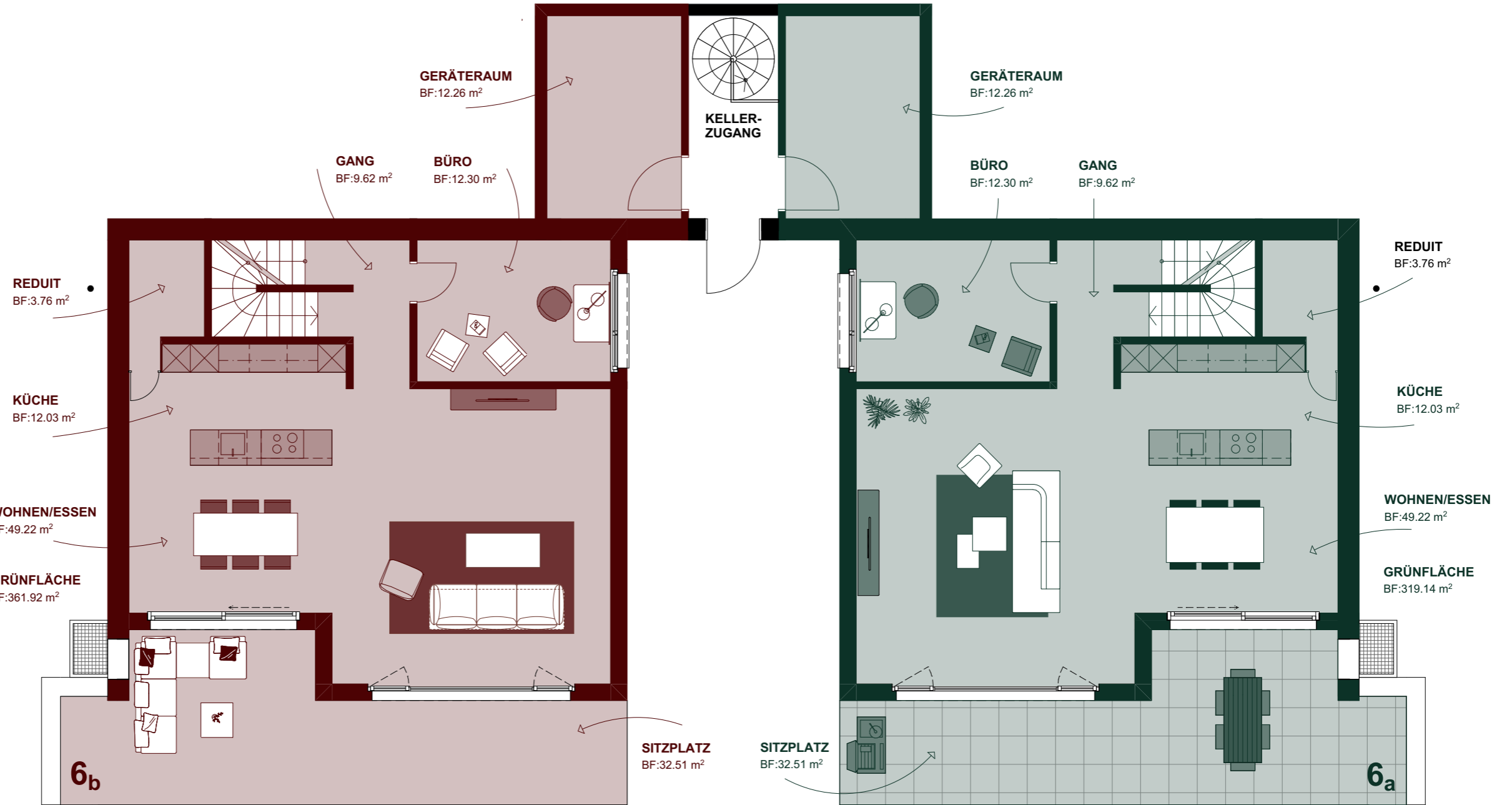
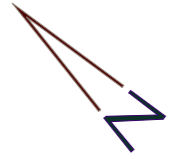
6 1/2
59.2 m²
238.7 m²



**HAUS 6a
UNTERGESCHOSS**
ZIMMER
WOHNFLÄCHE UG
GESAMTWOHNFLÄCHE

6 1/2
59.2 m²
238.7 m²

EG



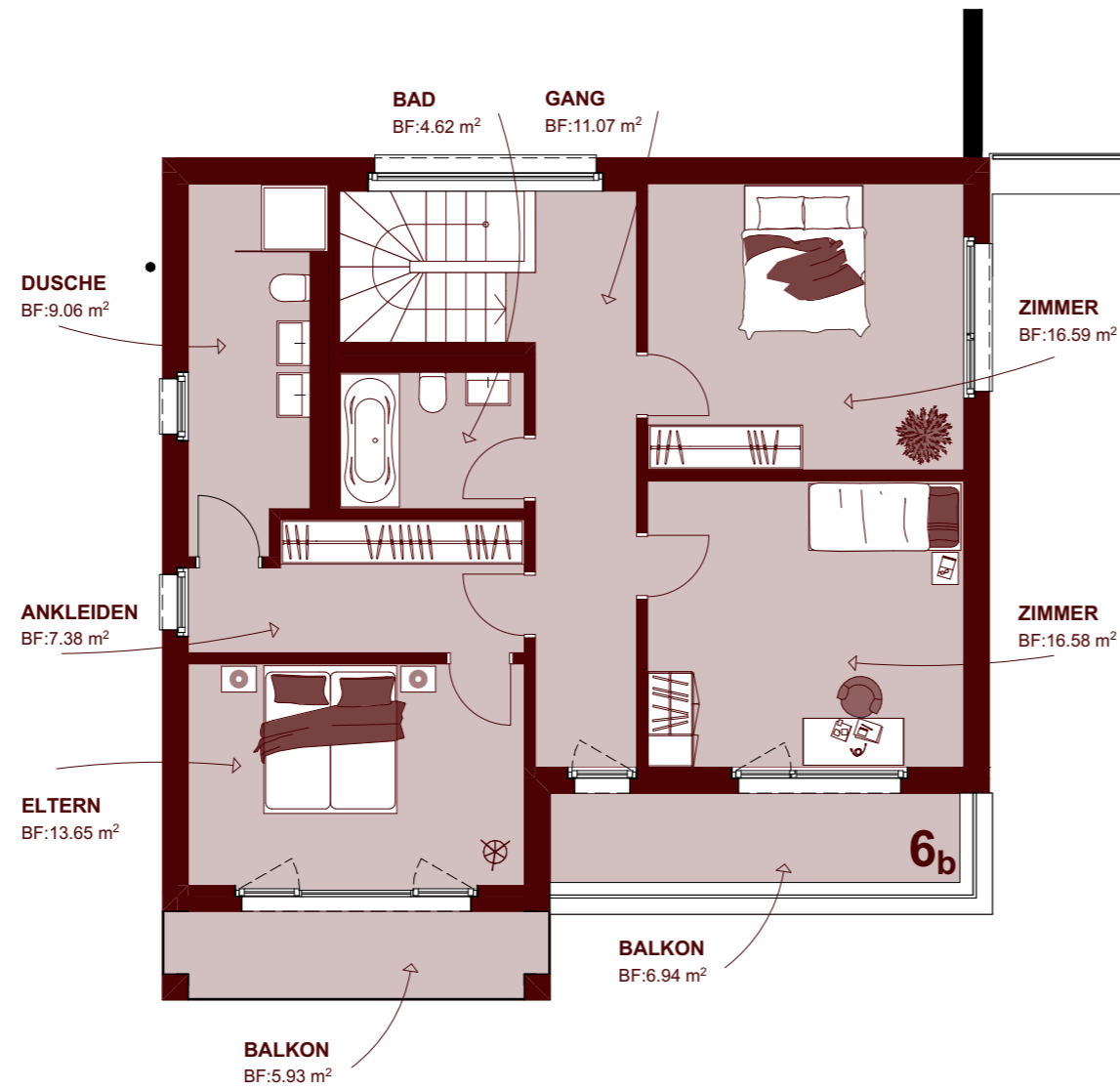
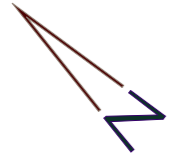
**HAUS 6b
ERDGESCHOSS**

ZIMMER $6 \frac{1}{2}$
WOHNFLÄCHE EG 89.3 m^2
GESAMTWOHNFLÄCHE 238.7 m^2

**HAUS 6a
ERGESCHOSS**

ZIMMER $6 \frac{1}{2}$
WOHNFLÄCHE EG 89.3 m^2
GESAMTWOHNFLÄCHE 238.7 m^2

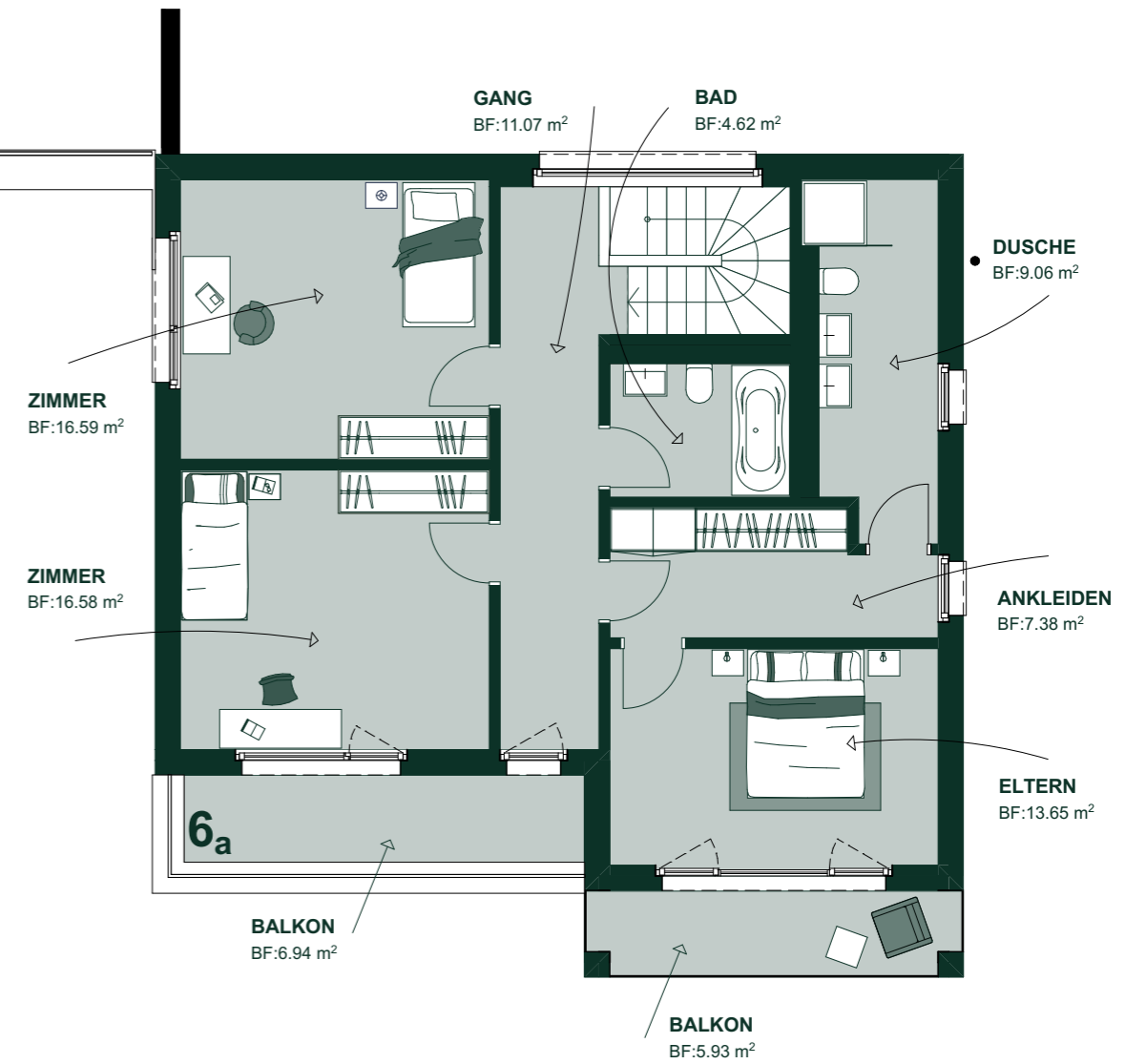
OG



**HAUS 6b
OBERGESCHOSS**

ZIMMER
WOHNFLÄCHE OG
GESAMTWOHNFLÄCHE

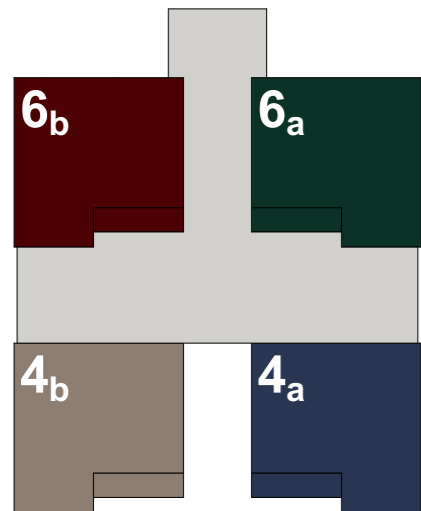
6 1/2
90.2 m²
238.7 m²



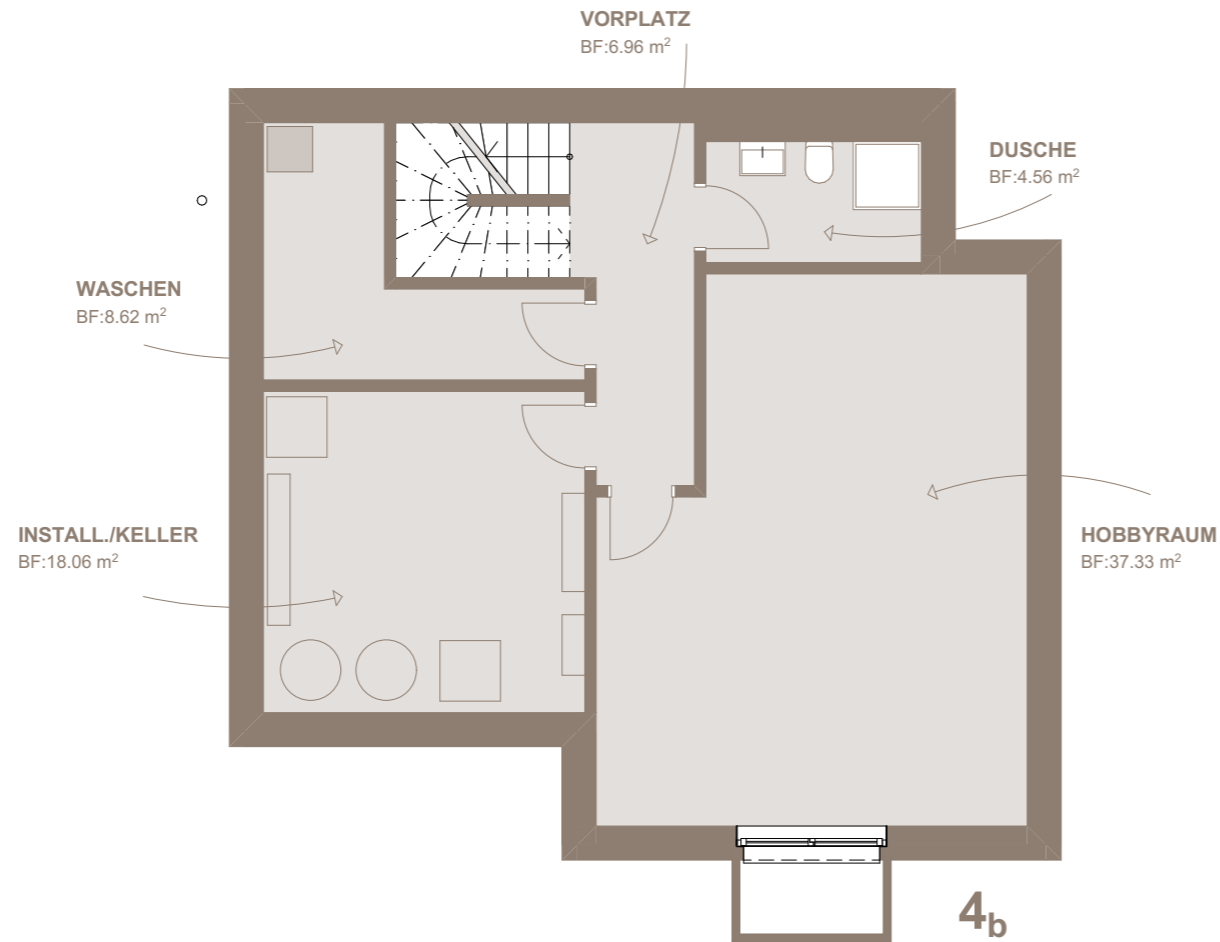
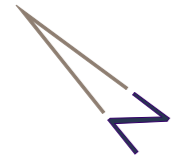
**HAUS 6a
OBERGESCHOSS**

ZIMMER
WOHNFLÄCHE OG
GESAMTWOHNFLÄCHE

6 1/2
90.2 m²
238.7 m²

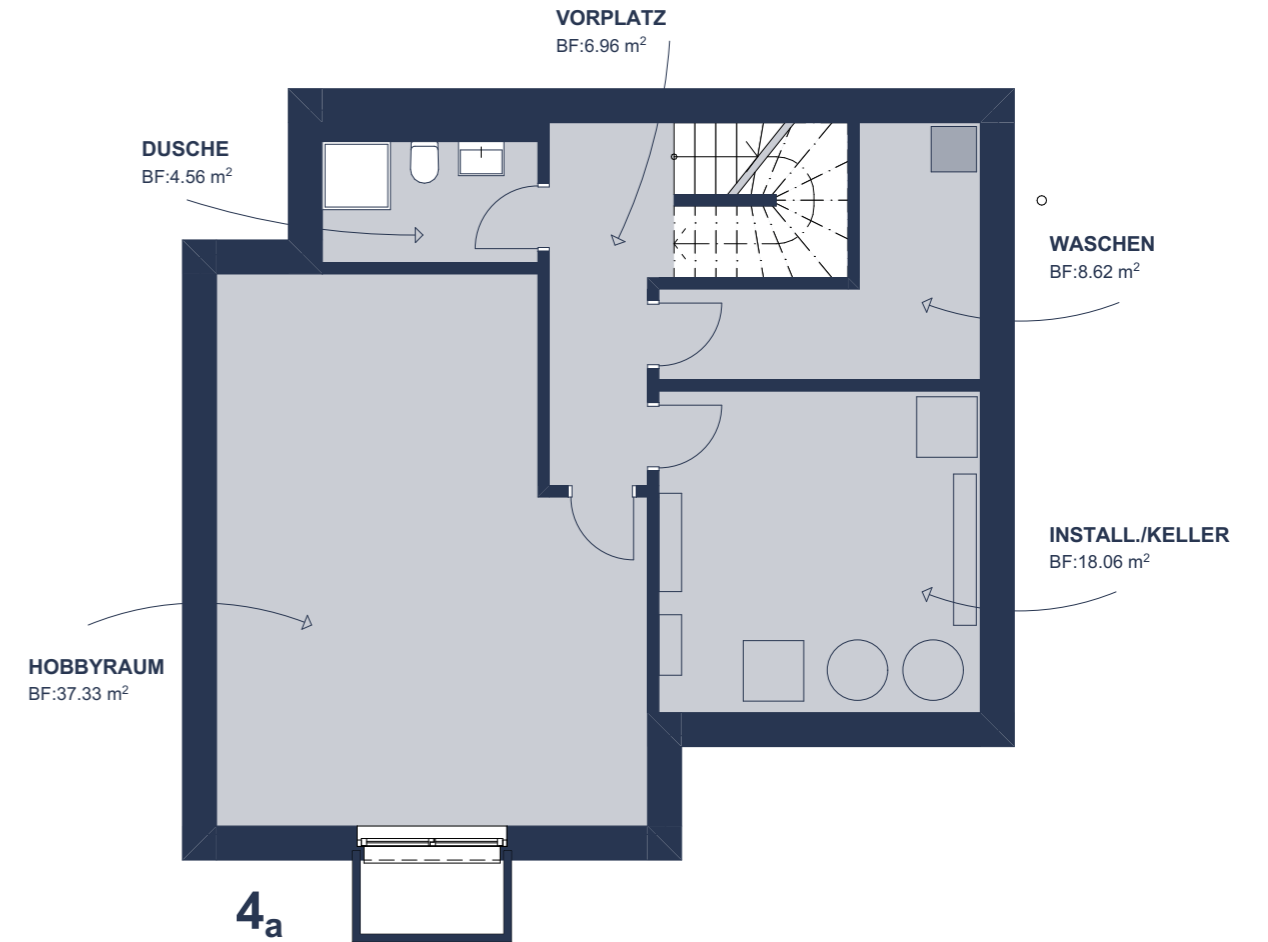


UG



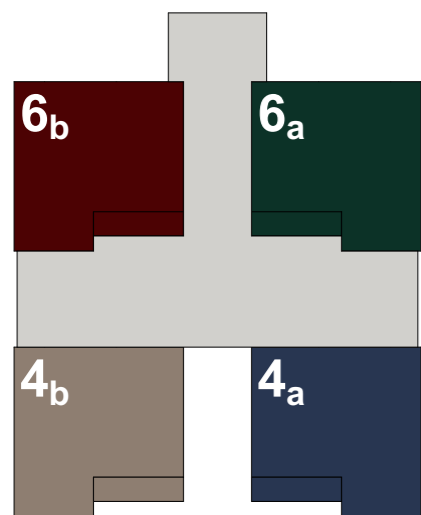
**HAUS 4b
UNTERGESCHOSS**

ZIMMER 5 1/2 - 6 1/2
WOHNFLÄCHE UG 65.2 m²
GESAMTWOHNFLÄCHE 242.4 m²

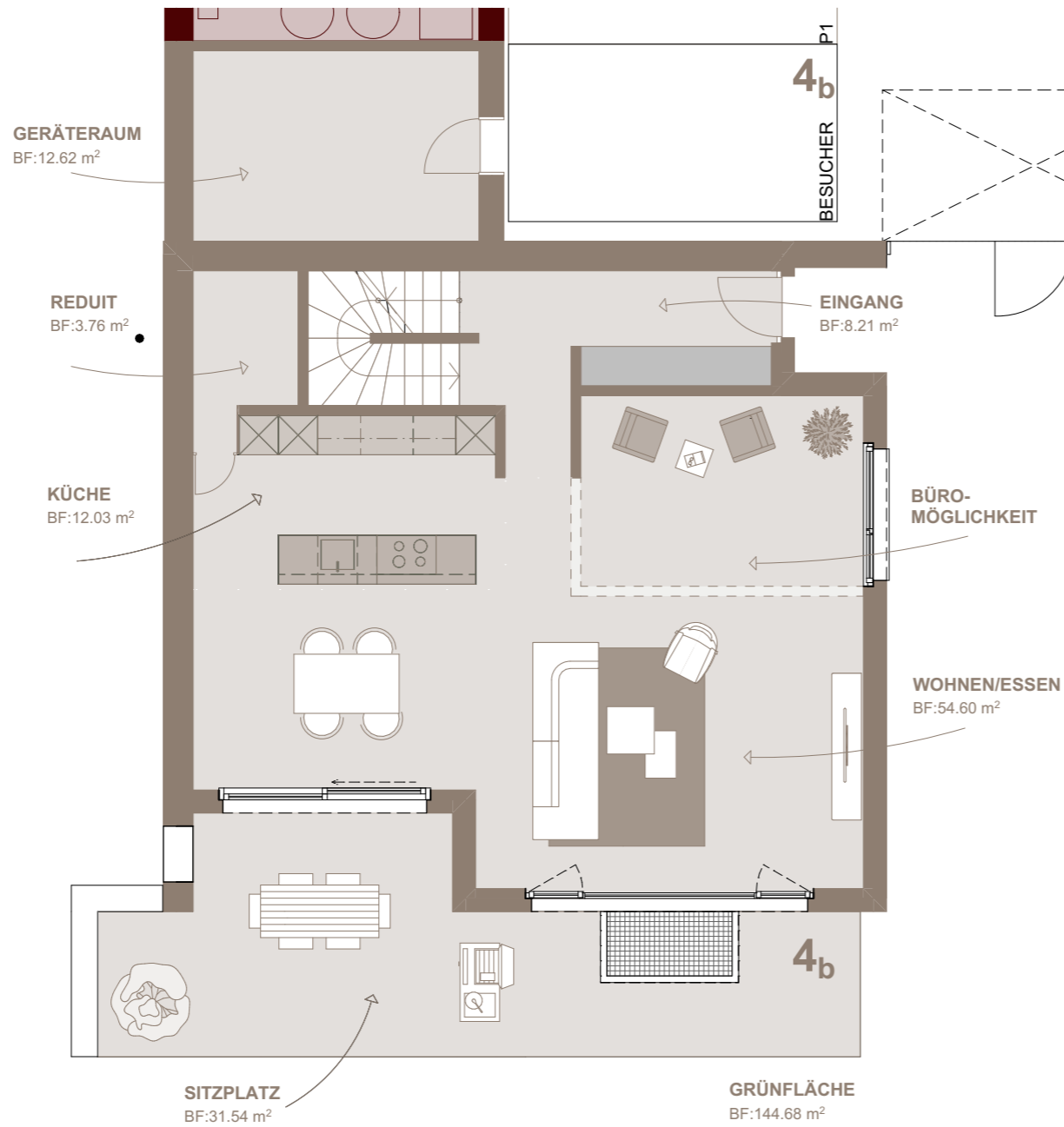
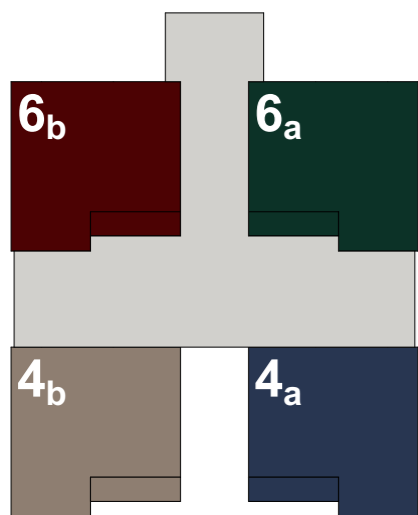


**HAUS 4a
UNTERGESCHOSS**

ZIMMER 6 1/2
WOHNFLÄCHE UG 65.2 m²
GESAMTWOHNFLÄCHE 242.0 m²



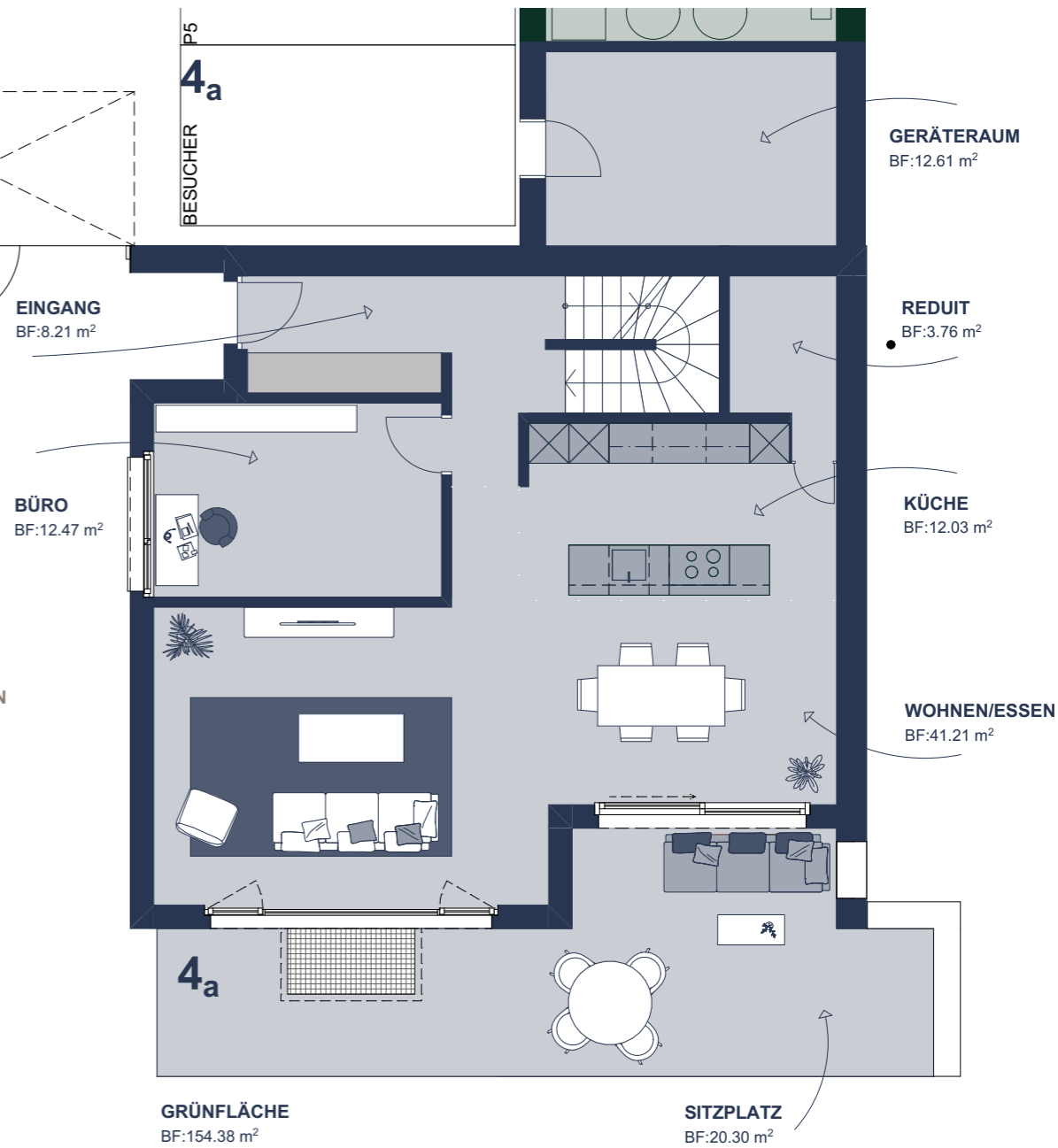
EG



**HAUS 4b
ERDGESCHOSS**

ZIMMER
WOHNFLÄCHE EG
GESAMTWOHNFLÄCHE

5 1/2 - 6 1/2
87.0 m²
242.4 m²

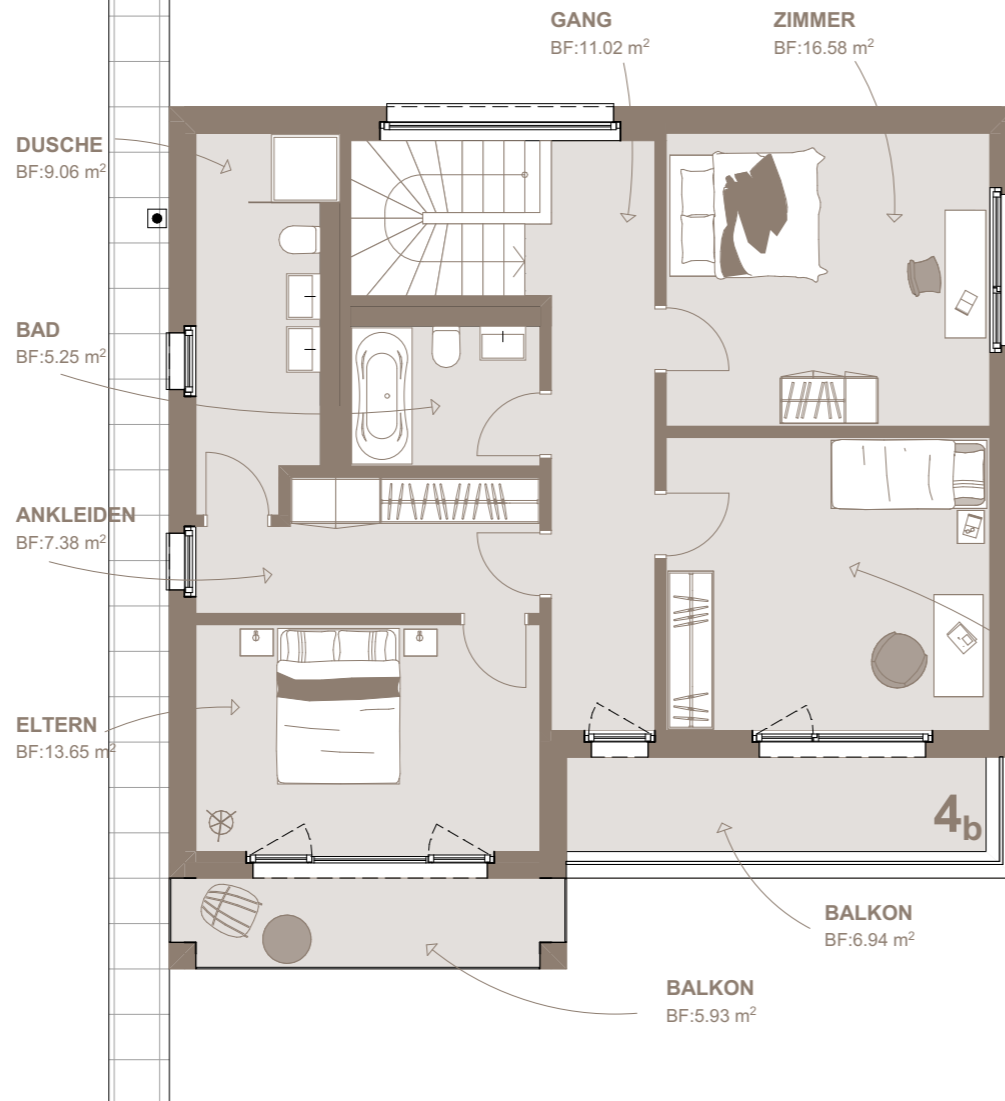
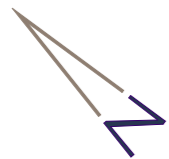


**HAUS 4a
ERDGESCHOSS**

ZIMMER
WOHNFLÄCHE EG
GESAMTWOHNFLÄCHE

6 1/2
86.6 m²
242.0 m²

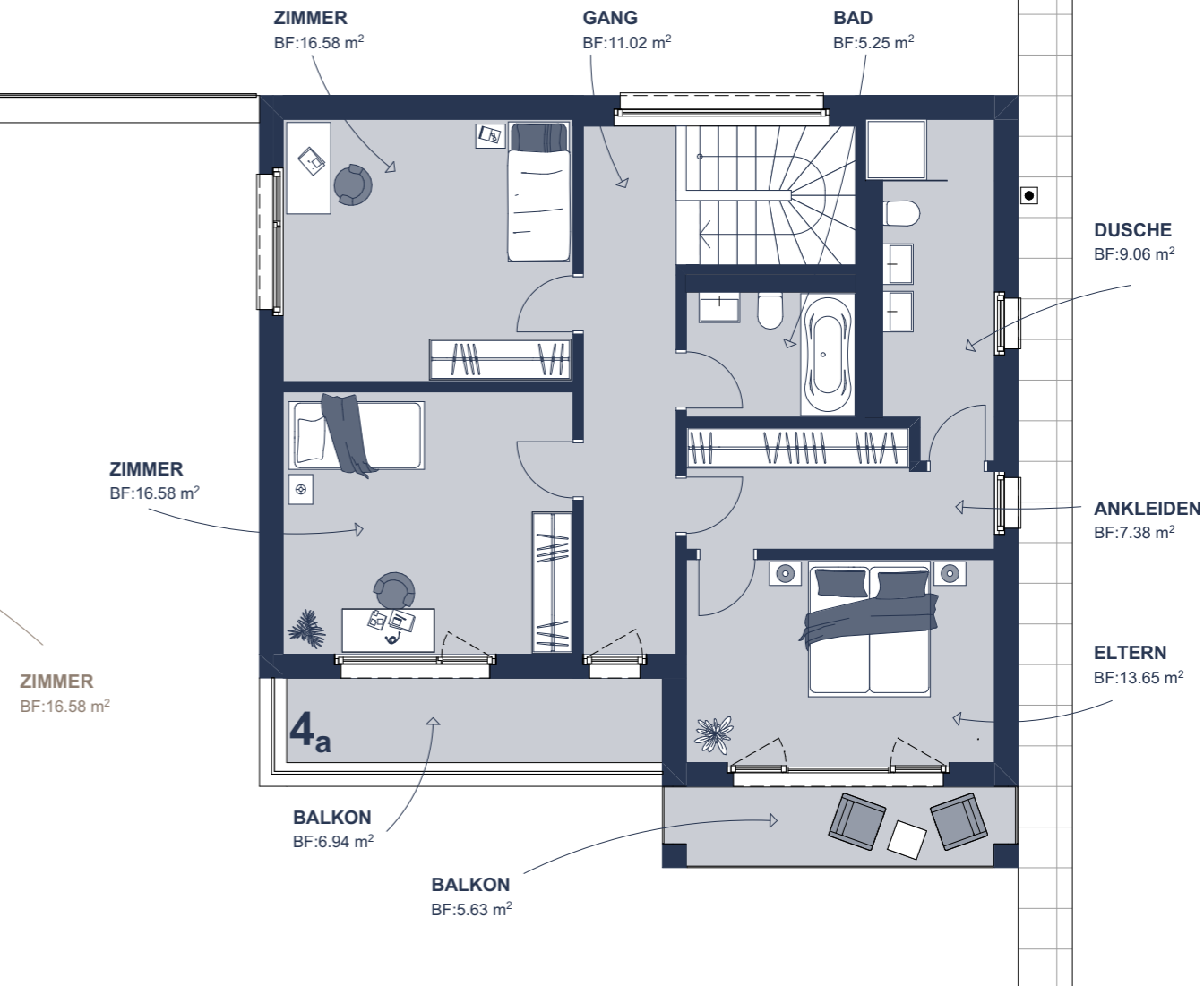
OG



**HAUS 4b
OBERGESCHOSS**

ZIMMER
WOHNFLÄCHE OG
GESAMTWOHNFLÄCHE

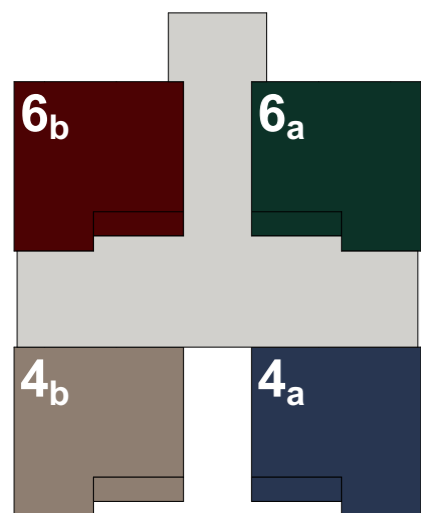
5 1/2 - 6 1/2
90.2 m²
242.4 m²

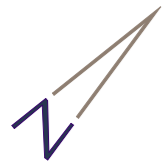


**HAUS 4a
OBERGESCHOSS**

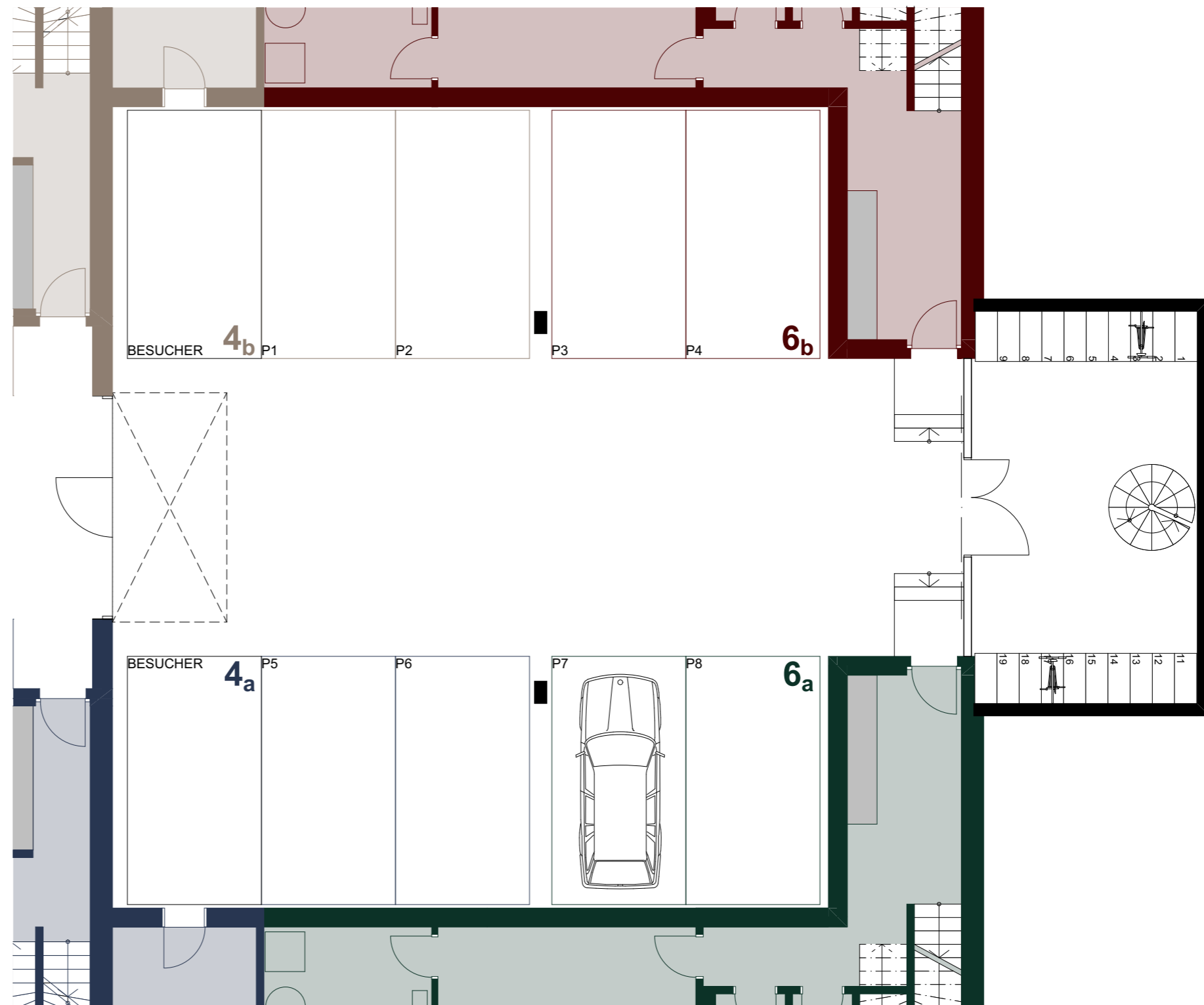
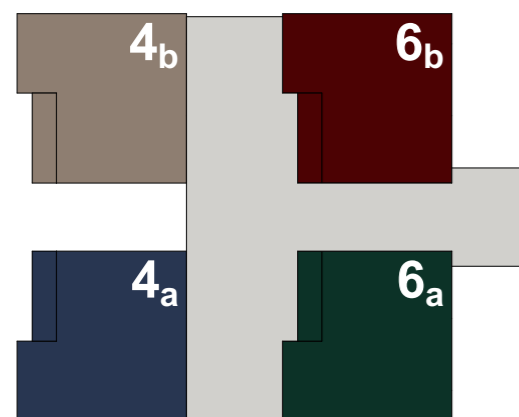
ZIMMER
WOHNFLÄCHE OG
GESAMTWOHNFLÄCHE

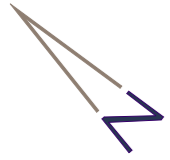
6 1/2
90.2 m²
242.0 m²



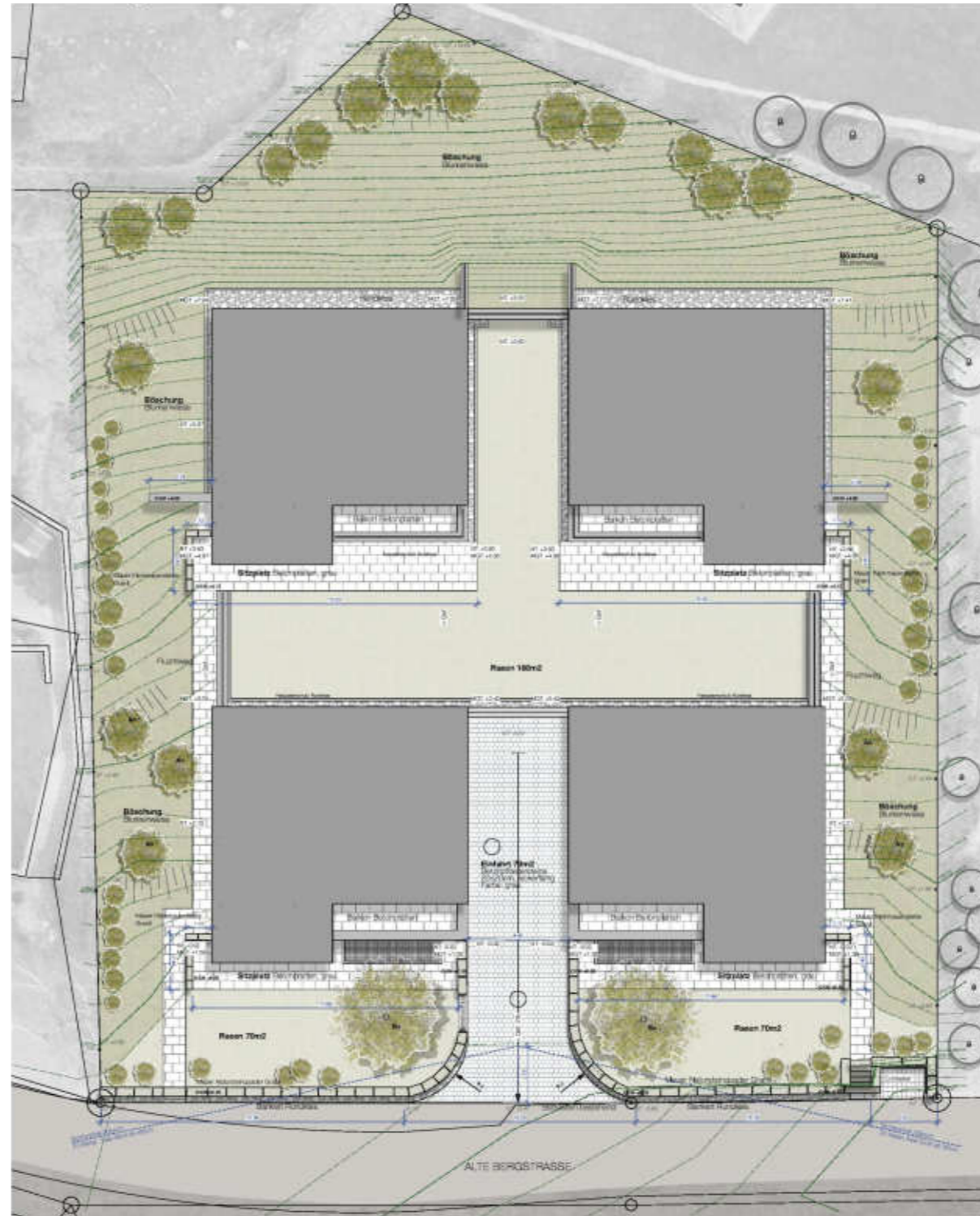
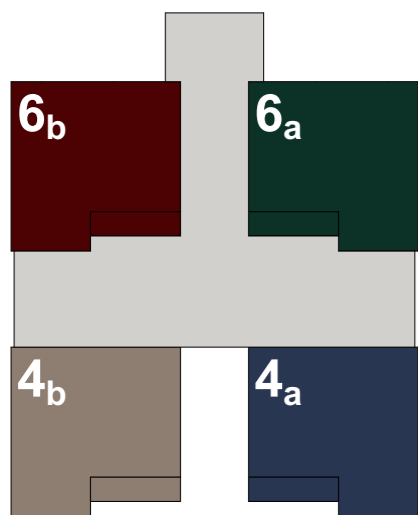


TIEFGARAGE 10 PARKPLÄTZE

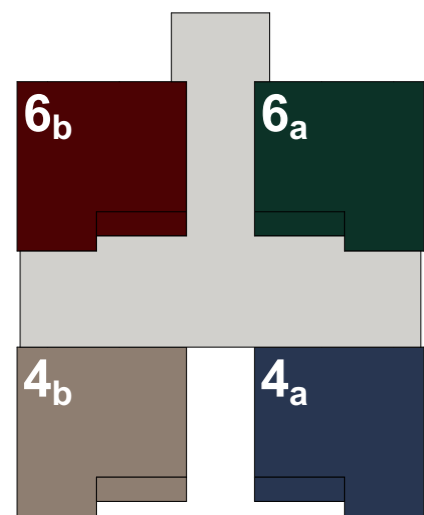




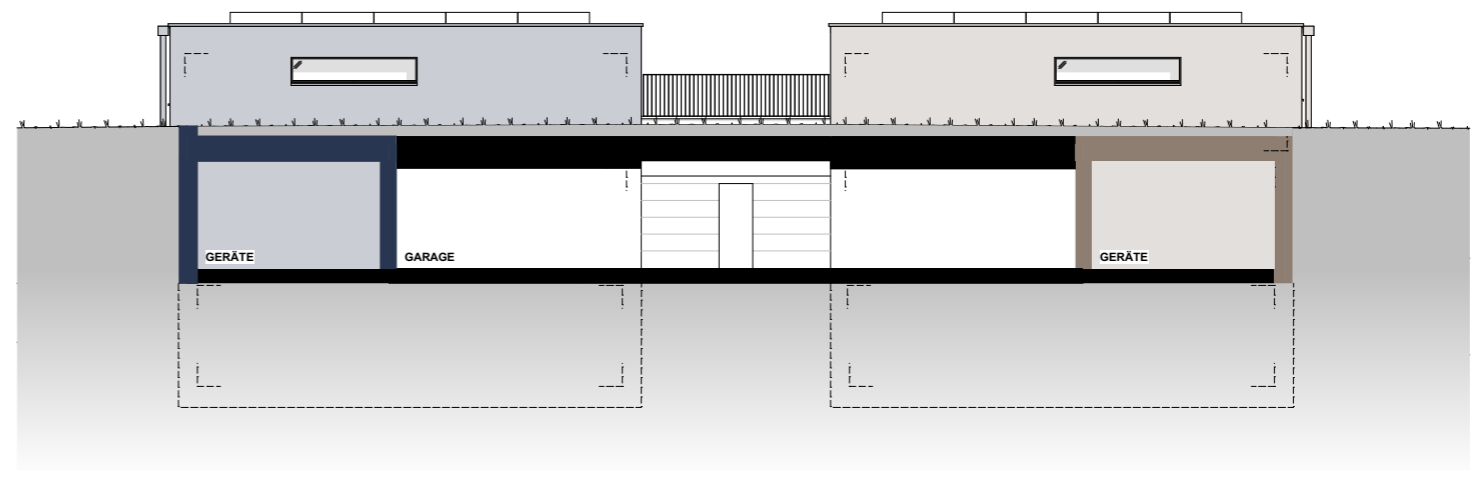
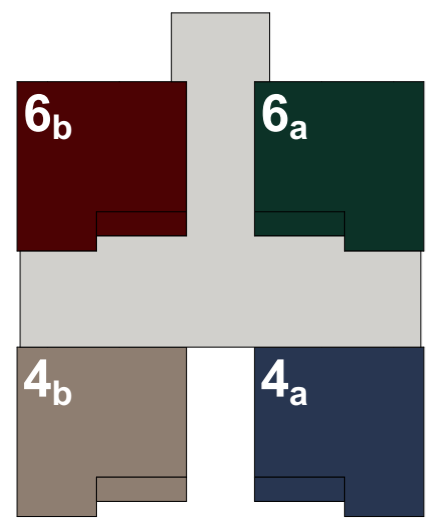
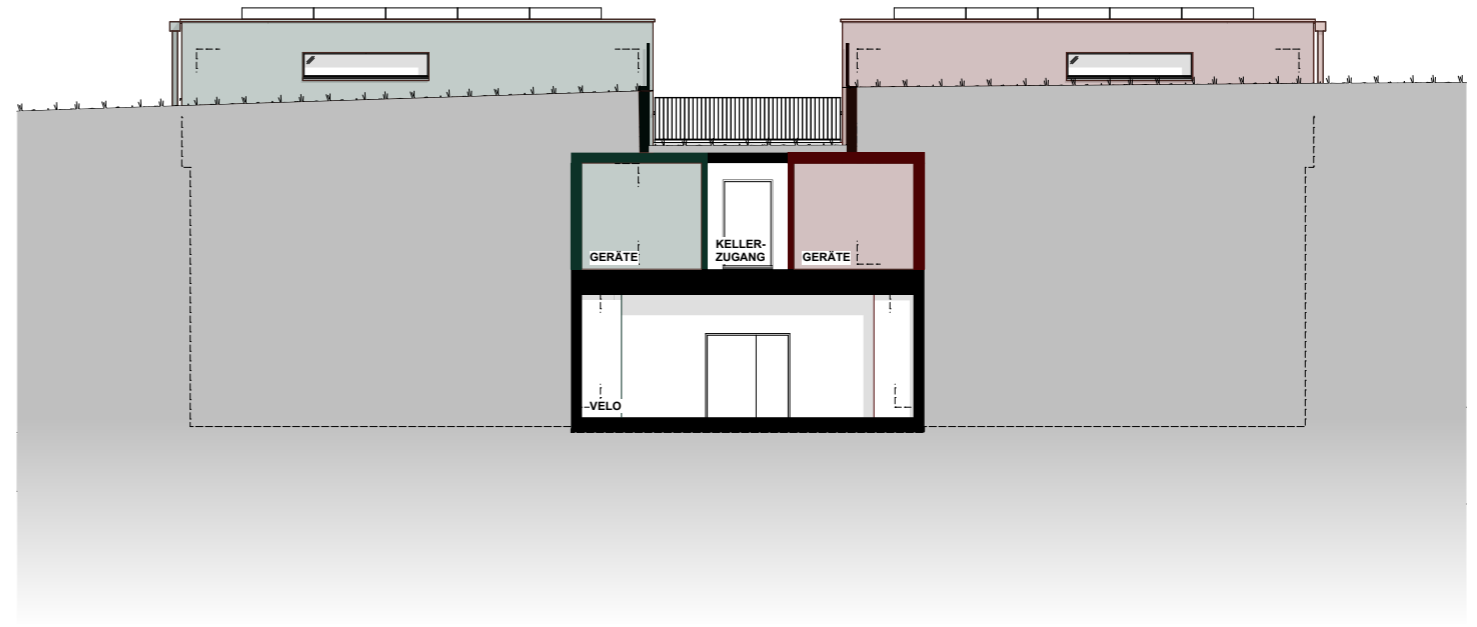
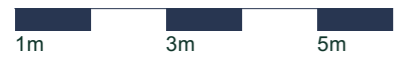
UMGEBUNG



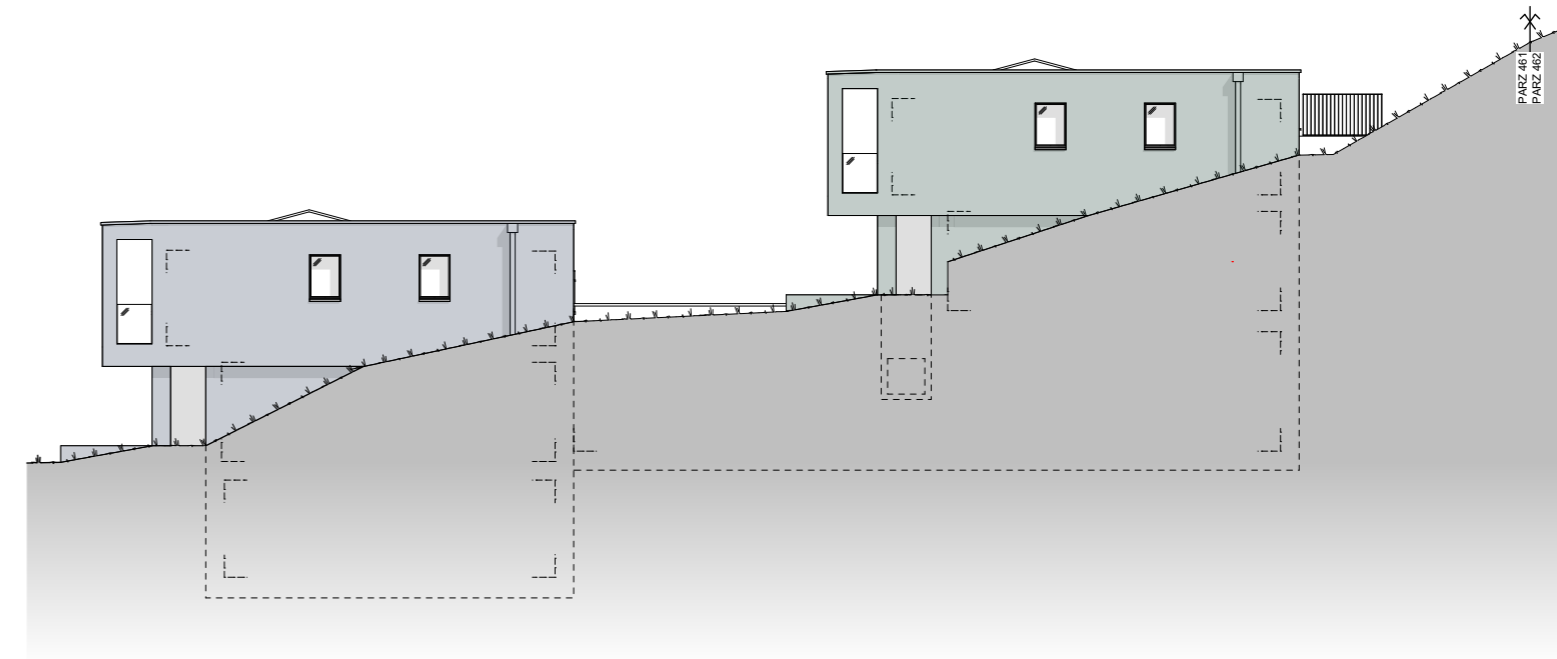
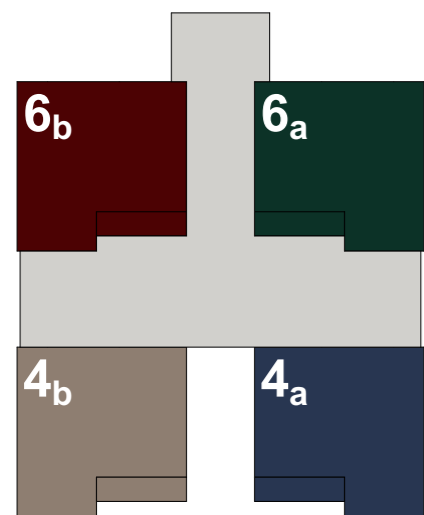
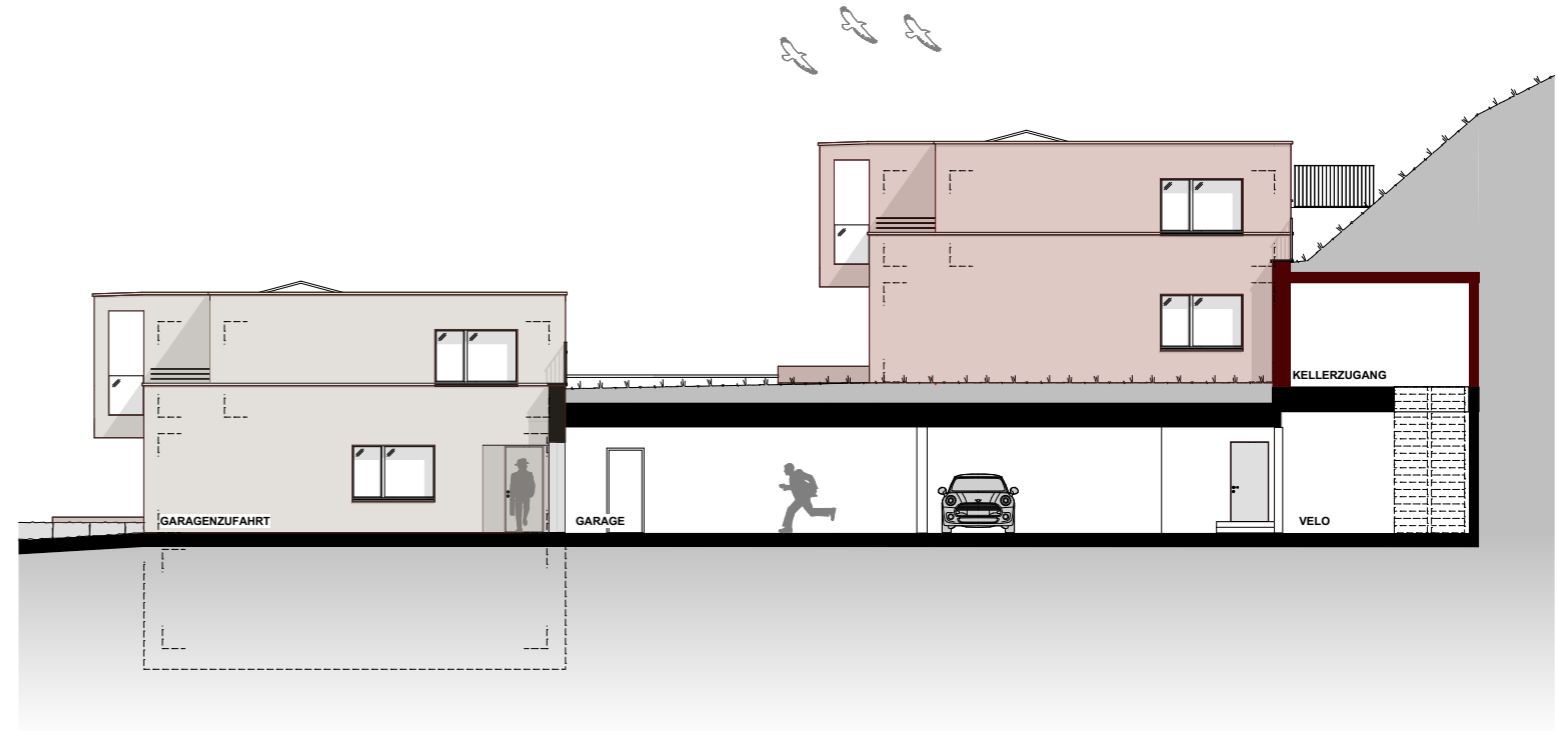
SÜDANSICHT



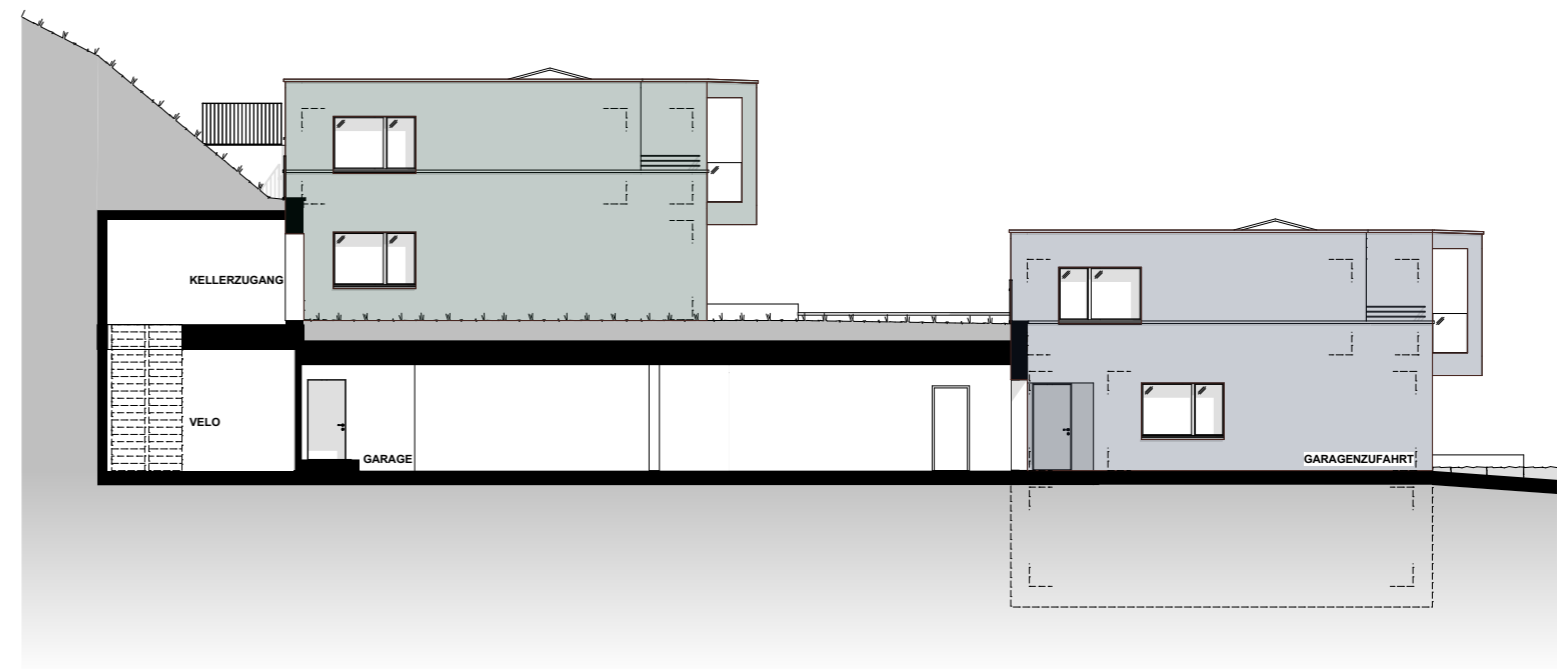
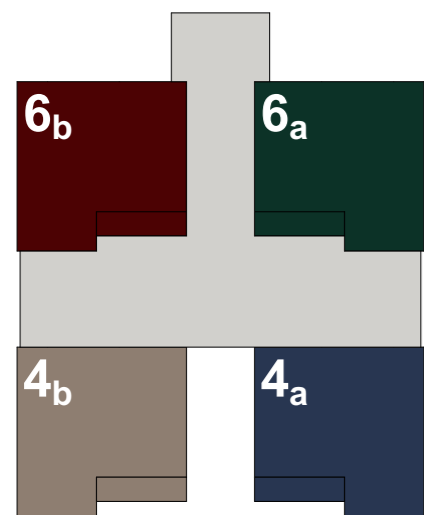
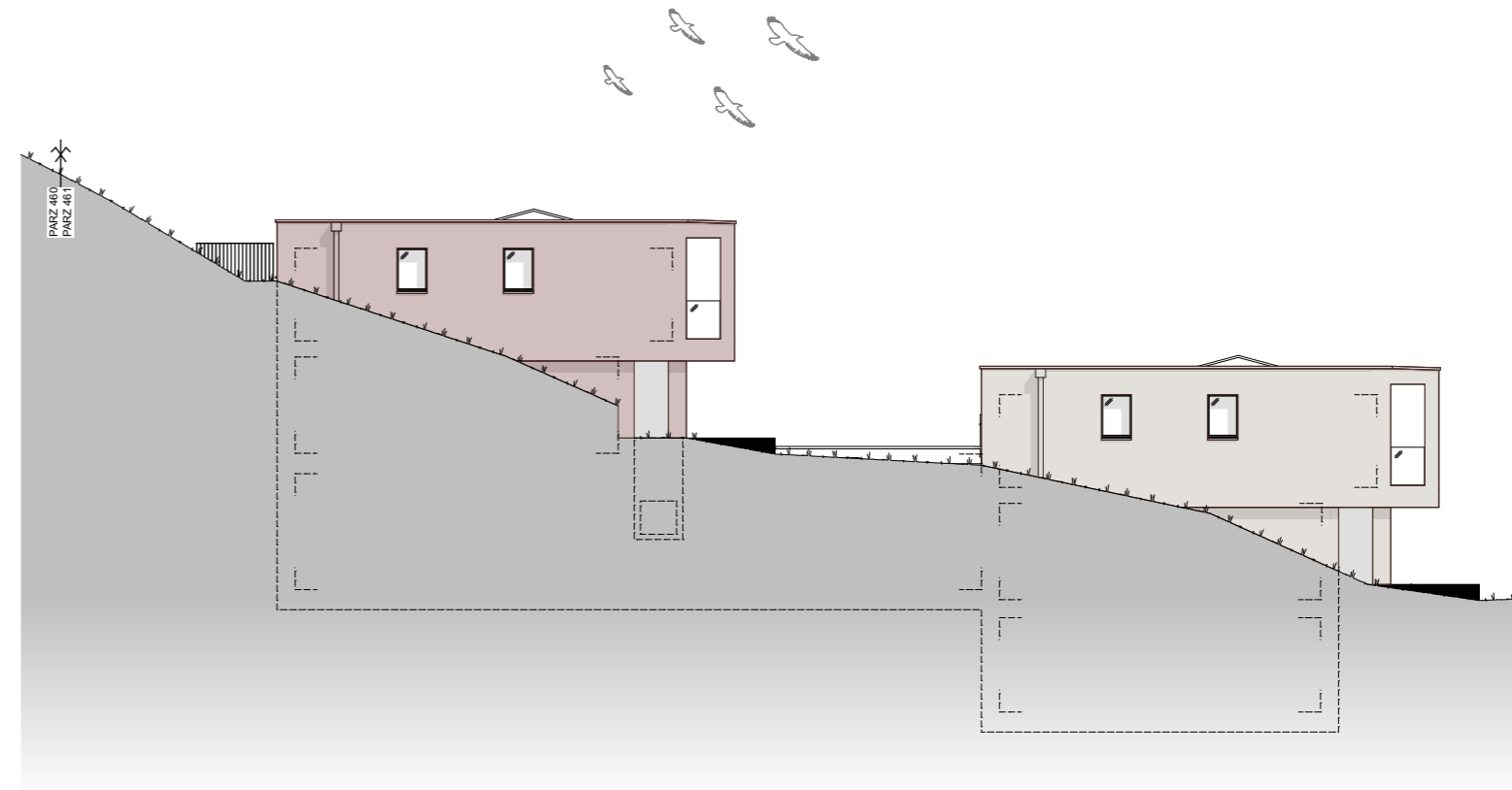
NORDANSICHT



OSTANSICHT



WESTANSICHT



EIN PROJEKT DER:



K+W-Immobilien AG

VERKAUF

Widmer Treuhand
Kasernenstrasse 24
8180 Bülach

Ansprechperson: Simona Widmer
E-Mail: info@widmer-treuhand.ch
Telefon: 044 862 05 15



ARCHITEKT

Marc Hess Architekten GmbH
Steinbruggstrasse 5
8165 Oberweningen

www.marchess.ch

**MARC
HESS**

ARCHITEKTEN

BAULEITUNG

S&W Baumanagement GmbH
Lättenstrasse 6a
8185 Winkel

www.swbau.ch

